

DS15

BRIT THERM[®]

Installation & Operating Instructions



Please read these instructions carefully before installation



636199

Contents

General Information.....	3
Pump Liquid & Operating Conditions.....	4
Pump Diagram.....	5
Installation.....	6, 7
Fault Finding.....	8, 9
Maintenance & Repair.....	10, 11
Guarantee Registration.....	12

General Information

These instructions guide you through the installation and operation of this **BritTherm™** Central Heating Circulator. The **Domestic Standard** is perfectly suited to operate in:

- Single zone heating systems
- Multi zone heating systems
- Underfloor heating systems
- Older solar systems

The Pump incorporates 3 constant speeds enabling you to set it based on system demand.

It has a connection size of **1 ½"**, a maximum head of **6 metres** and a port to port distance of **130mm** making it perfect for domestic applications.

*This is a replacement integrated circulator

*The benchmark for the most efficient circulators is $EEI \leq 0.20$

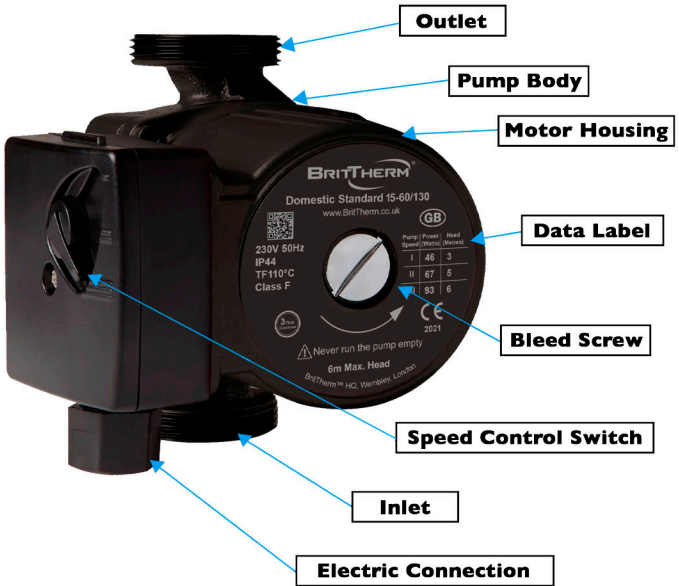
Pump Liquid & Operating Conditions

BritTherm™ pumps require clean, thin, non-aggressive liquids to operate correctly and prevent damage to their internal components. The liquids used must not contain any solid particles, fibres or mineral oil.

Liquids running through circulation pumps used on heating systems must comply with the accepted standards of quality especially in domestic applications.

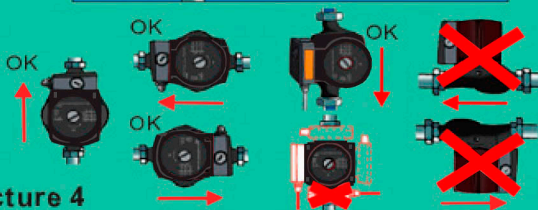
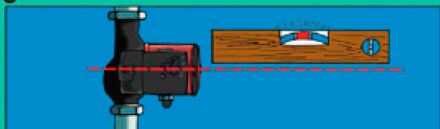
Liquids that do not comply will void the warranty offered with the circulation pump.

Pump Diagram

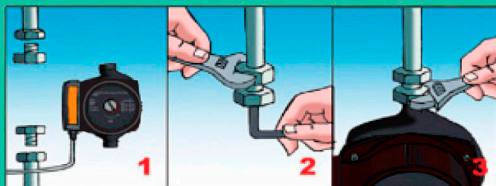


Installation

Picture 3

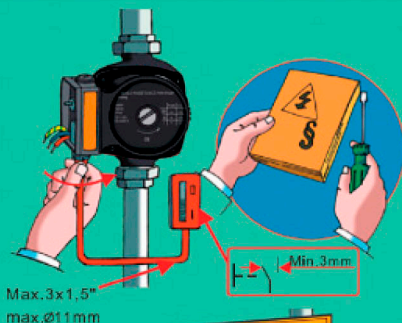


Picture 4

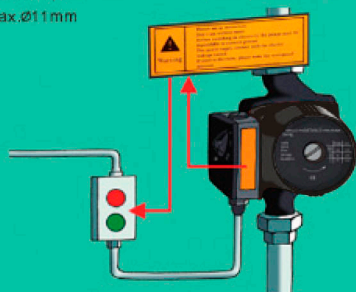


Attention: Ensure the pump is installed with the motor shaft in the horizontal position

Picture 5



Picture 6



Attention: Fit the two gaskets when the pump is mounted correctly between the flow and return pipes

Fault Finding



Before starting any work on the pump please ensure the electricity supply is turned off and cannot be accidentally switched back on at any time

Fault

Pump doesn't run

Cause

Remedy

A) Blown fuse

Replace fuse

B) Inadequately connected
power supply

Check electrical connection

C) Pump is defective

Replace pump

D) Impurity in the system

Disconnect and clean

E) Bearing has blocked
pump from running

Run at high speed for a
for a short period or loosen
the rotor at the end of the
shaft with a screwdriver

Fault

Noise in the system

Cause

A) Air in the system

B) Pump speed too high

Remedy

Vent the system

Reduce the speed

Fault

Noise in the pump

Cause

A) Air in the pump

B) Inlet pressure too low

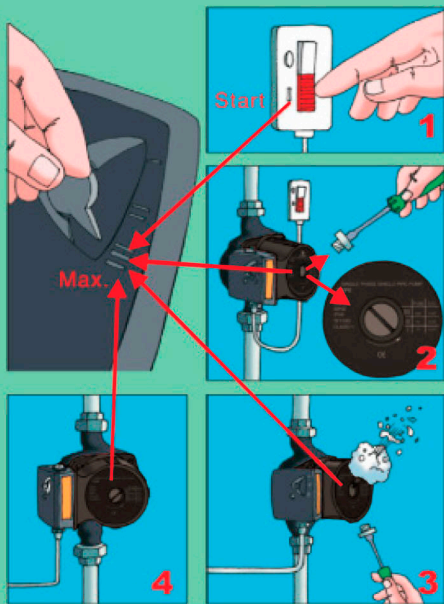
Remedy

Let the pump run, it vents itself over time

Increase the inlet pressure

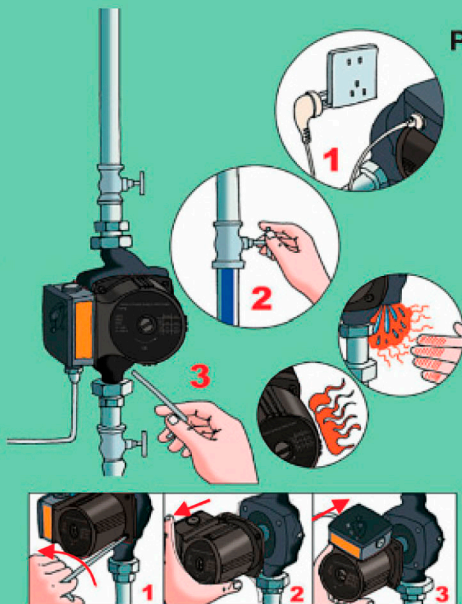
Maintenance & Repair

Picture 7



Attention: Ensure the pump is fully vented before first time operation

Picture 8



Attention: The pump liquid may be scalding hot and under high pressure. Before removing head screws the system either requires draining, or the pump needs to be isolated

Guarantee Registration

This Pump is covered against manufacturing malfunction by a 3 year guarantee. The guarantee is only valid if the pump has been installed correctly, the system is maintained adequately, and the guarantee is registered within 30 days of purchase.

The pump is covered for a free of charge replacement should malfunction occur within the first 3 years from the date of sale.

To register go to www.BritTherm.co.uk and click
Register a Guarantee

You will need:

- Date of purchase
- Address where pump is fitted
- Name of supplier
- Supplier invoice number

Please retain your purchase invoice as it may be required in the event of a guarantee claim.

To make a claim please contact BritTherm by email in the first instance: info@BritTherm.co.uk